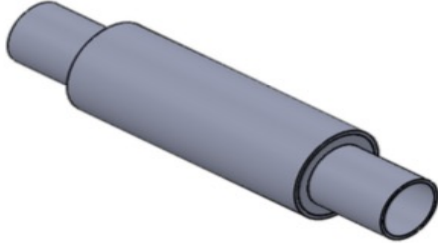




Fitch Fuel Catalyst c/o
 Advanced Power Systems Inc
 18 Hemlock Dr
 New Hartford, CT 06057
 Ph./Fax 860-921-0009

Fitch Fuel Catalyst Commercial Natural Gas Burners



Features/Specs

- Schedule 40 steel
- XX defines nipple size
- 2" 3" 4" 6" available NPT or straight for welding
- Acrylic yellow paint
- Designed to withstand 150 PSI
Maximum pressure at 240 deg. F
- 20,000 operating hours design
- Product is made to customers specification

Model	Diameter inches	Length inches	xx = Nipple size	Weight lbs.
HO50-5 NG	5"	13.5	2/3/4"	19
HO75-5 NG	5"	14.6	2/3/4"	23
HO100-5 NG	5"	15.6	2/3/4"	28
FHD5-6 NG	6"	19	2/3/4"	35
FHD10-6 NG	6"	23.5	2/3/4"	50
FHD15-6 NG	6"	25	2/3/4"	75
FHD20-6 NG	6"	29	2/3/4"	140
FHD25-6 NG	6"	29.5	2/3/4"	147
FHD30-10 NG	10"	32.5	2/3/4/6"	158

Model	Schedule 40 steel construction				Maximum Power		Heat (output)		Steam (output)	
	Gas CM3/HR	Gas CUFT/HR	Propane GPH LPH		HP	KW	MBH	KWH	lbs /hr.	Kcal/ Hour
HO50-5-xx NG	134	4,725	51	192	80	60	4,134	1,211	3,481	1,041,863
HO75-5-xx NG	201	7,088	76	288	120	89	6,202	1,817	5,222	1,562,794
HO100-5-xxNG	267	9,450	102	385	140	104	8,269	2,423	6,962	2,083,725
FHD5-6-xxNG	802	28,350	305	1,154	280	209	24,806	7,268	20,887	6,251,175
FHD10-6-xxNG	1,605	56,700	610	2,308	580	432	49,613	14,536	41,774	12,502,350
FHD15-6-xxNG	2,407	85,050	915	3,461	900	671	74,419	21,805	62,661	18,753,525
FHD20-6-xxNG	3,209	113,400	1,219	4,615	1200	895	99,225	29,073	83,547	25,004,700
FHD25-6-xxNG	4,012	141,750	1,524	5,769	1500	1119	124,031	36,341	104,434	31,255,875
FHD30-10-xxNG	4,814	170,100	1,829	6,923	1800	1342	148,838	43,609	125,321	37,507,050



Sample Horizontal
Installation FHD5-NG
with By pass



Sample Vertical Installation
FHD20-NG with By pass



Sample Horizontal
Installation FHD30-NG
In Line