



Natural Gas or Oil

Customer Information

| | | | |
|----------------|--------------|----------------|---------|
| Company | RAK Ceramics | Equipment Type | Burner |
| Street Address | | Fuel Type | Gas |
| City | Dubai | Serial/VIN # | Unknown |
| Postal Code | | | |
| Country | UAE | | |

Burner Information

| | | | |
|-------------------------|-------------|----------------------------|---------|
| Purpose | Process | Natural Gas Pressure | 100mb |
| Fuel Type | Natural Gas | Pressure Before Regurlator | 2.5 bar |
| Size | FHD5-NG | Feed Pipe Size DIN | 100mm |
| Liquid Fuel Return Line | No | # of Burners on Feed Line | 280 |

Equipment Readings - Gas Consumption

| | | | |
|-------------|------------------------------|-----------------------------|---------------------------------|
| Fitch Model | 25/02/2019 | 26/02/2019 | 27/02/2019 |
| None taken | Pre-Installation Baseline | Post Installation 1 Hour | Post Natural Gas Adj. 1 Hour |

Readings Comments/Exceptions

- Pre-Installation Baseline



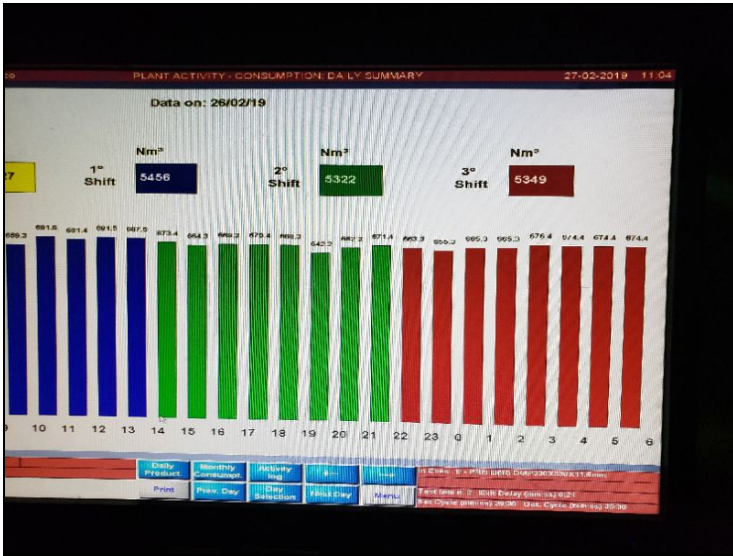
00077



Burner model

- Post Installation 1 Hour

00077



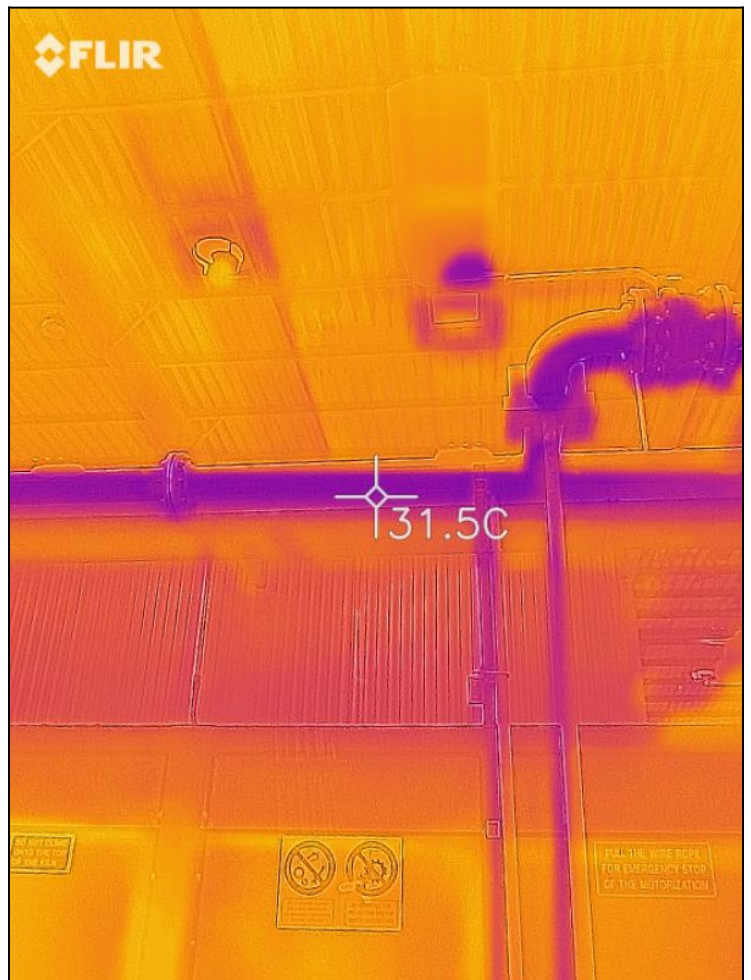
Consumption reading before pressure increase



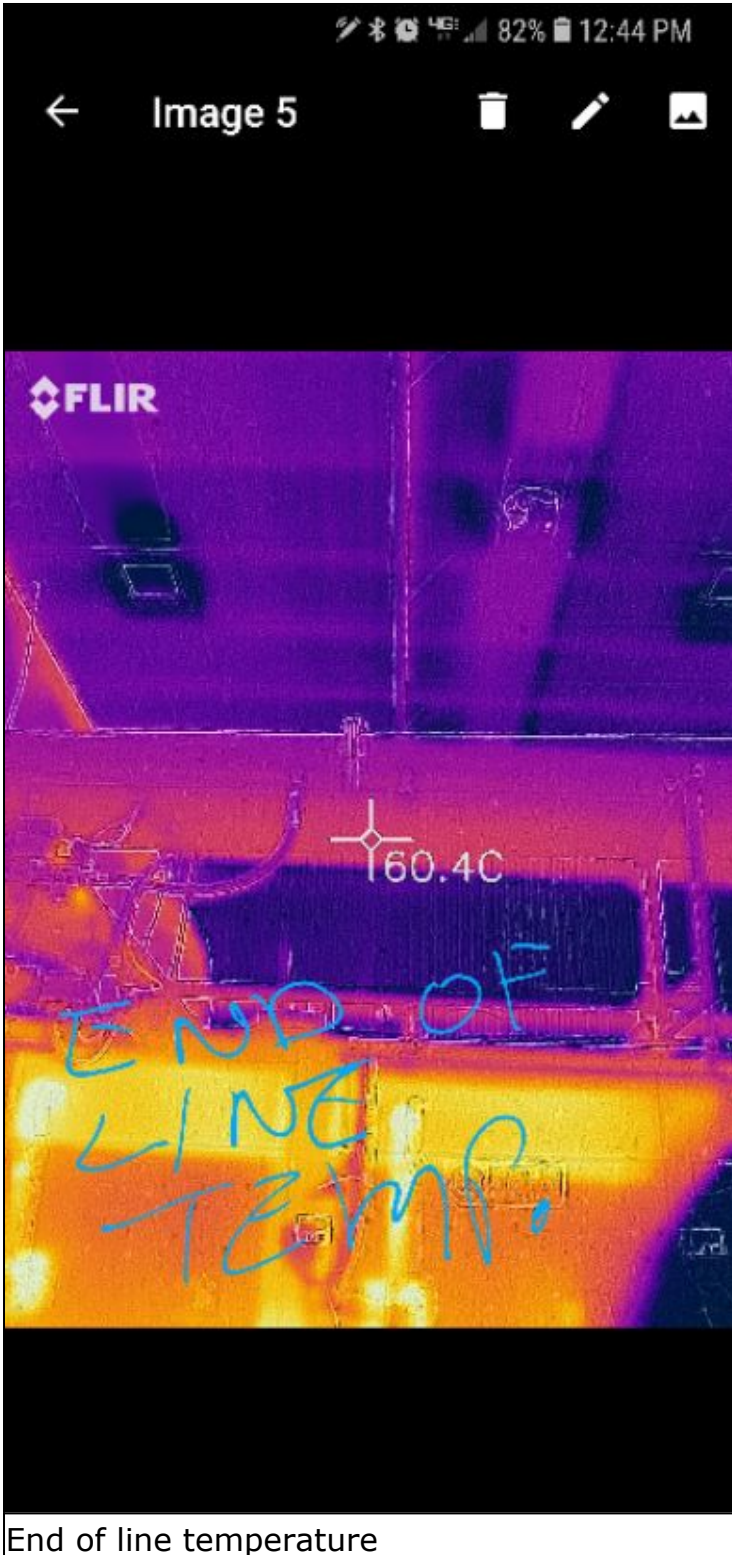
Burner cell thermostat 8 burners each



Flowmeter



Inlet gas temperature flir camera



End of line temperature

- 1 Hour Post Adjustment



Customer lobby



Main office



RAK factory

Additional Information/Images

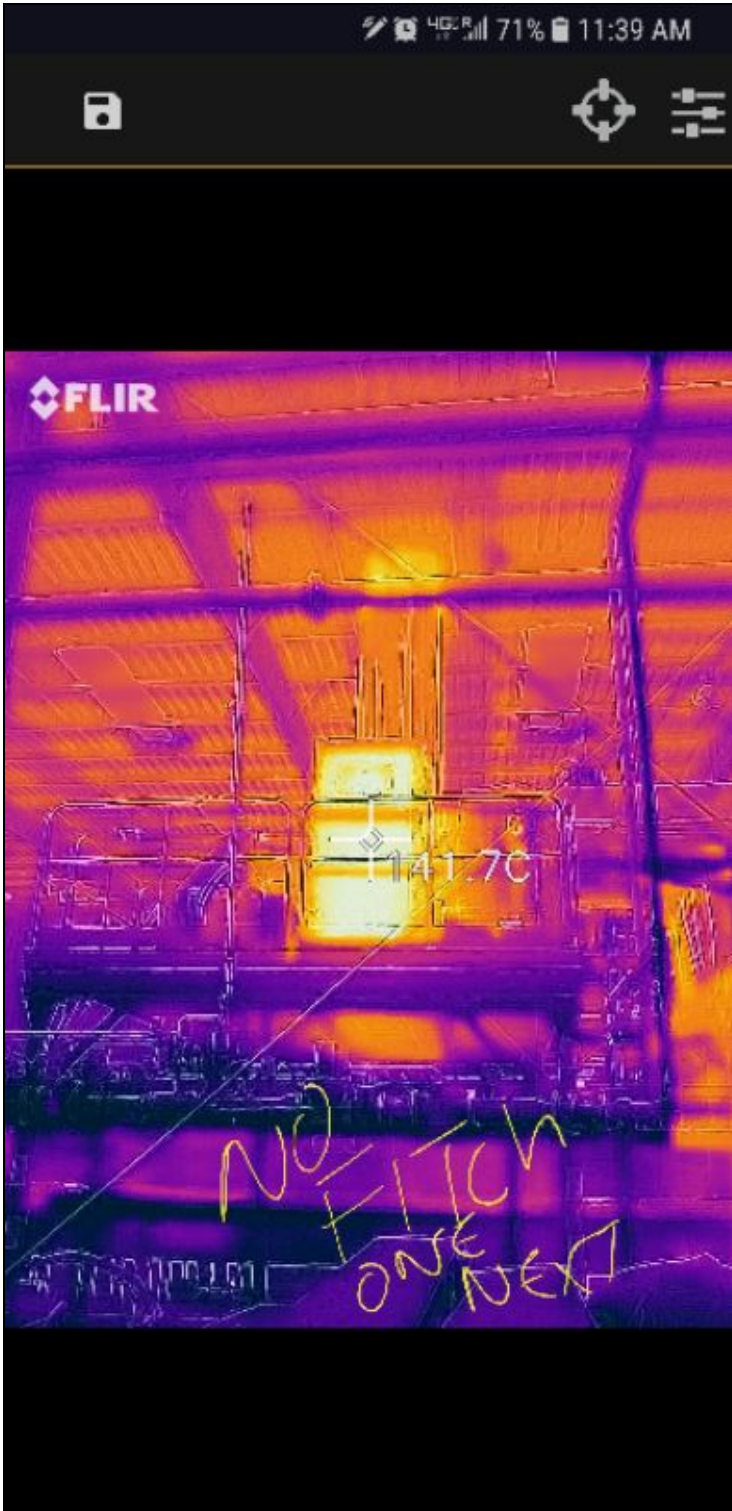
Installed FHD5-ng ,turned on Fitch unit, ran overnight, did not experience and change in consumption.

Tuesday 26 February ,had customer install pressure gauge at end of gas main. Measured 80 MB. Turned off fitch using bypass. Pressure was 160MB. Because of restrictions of Fitch unit, pressure after regulator must be increased to compensate for pressure drop over catalyst. Customer was able to increase pressure at regulator to 110MB.

Still not high enough, regulator needs stronger spring to increase desired amount.

With higher pressure , reduction of consumption was 2.5%.
A week later after our departure, pressure was increased. Reported reduction in consumption was 6.3%.
Customer will run for 4 weeks to aquire statistical average reduction in consumption.
No equipment was available for monitoring emissions or combustion analyzing.

00077



Exhaust temperature at fan no fitch



Exhaust with Fitch

Signature

28/02/2019

Date Completed

10:08 PM

Time Completed



Paul Barone

I hereby acknowledge the satisfactory installation of the Fitch model listed and all test readings have been obtained and documented.